



Installation Instructions
20' x 8'6" Blue Water Pontoon Top

Your kit contains:

- (10) Crown Bows
- (22) Crown Bow Pins
- (2) Eyebrow Bows
- (4) Eyebrow faspins w/ lanyard
- (4) 1/4" x 1 3/4" truss Head Bolts with Nyloc Nuts
- (4) 9' Side Rails
- (4) 1" x 1" x 20" Splice Tubes
- (16) 1/4"-20 x 1 3/4" Truss Head Bolts with Nyloc Nuts
- (4) Linear Actuators
- (1) Battery Harness
- (1) 14' Actuator Harness
- (1) 24' Actuator Harness
- (4 sets) Rail Clamps for actuator
- (8) 1/4"-20 x 1 3/4" Truss head bolts with Nyloc Nuts
- (8) 1/4"-20 x 2 3/4" truss head bolts with Nyloc nuts
- (8) 1/2" x 2 1/2" Hex Head Bolts with nuts for actuator mounting
- (4) Upper Actuator Mounts
- (4) Lower Actuator mounts
- (4) Deck Shields
- (55) Snap Clips
- (4) 9' Side Rails
- (1) Reversing Relay with 2 remotes
- (1) Rocker Switch
- (15) Zip ties
- (19) #8 x 3/4" Screws
- (8) 1/4" x 3/4" Truss Head Bolts with Nyloc Nuts
- (8) 5/16" x 1 1/2" Hex Head Bolts with Nyloc Nuts
- (8) 1/4" -20 x 1" Truss Head Bolts with Nyloc Nuts
- (16) 1/4" Flat Washers for rail clamps
- (16) 5/16" Flat Washers
- (2) Hand Held Remotes

Assembly of Frame

For ease of assembly we suggest using saw horses or another sustainable supports to support side rails at a working height.

1. Place side rails approximately 8' apart as shown in below picture.



2. Insert Left 1C to C1 as marked inside rail. Right 2C to C2 as marked inside rail.



3. Install pre-drilled splice box aluminum as shown in below picture. Use (4) 1/4" x 1 3/4" Truss head bolts and (4) 1/4" lock nuts. On splice bars match corresponding letters to face each other. (A to A, B to B, etc)



4. Insert cross bows using rivets to secure in place.



5. The rivets will be held in place by the canvas.



6. Insert front and rear brow bows as shown.



Install $\frac{1}{4}$ "-20 x $1\frac{3}{4}$ " Truss head bolts in second hole and insert the quick pin in the first hole as shown. Secure the keeper tab on the quick pin as shown below.



Establishing position of linear actuators

Your Blue Water top is designed to properly fit a variety of makes and models of pontoons. The placement of the (4) linear actuators will vary depending upon the location of doors and your railing design.

The best placement for the linear actuators is 1'-4' from each end of the side rails. Obviously you do not want to place the actuators in front of your side doors. See picture below.



Check the bolt placement for the upper plastic actuator support before drilling holes for bottom actuator support. Some pontoons may require removal of furniture to access.



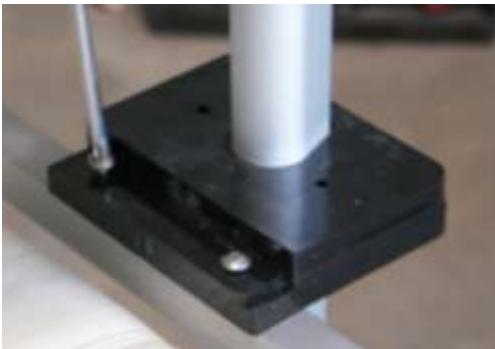
For most applications, place actuator bottom bracket onto edge cap of pontoon and drill (2) holes to secure using 5/16" x 1" Hex Head bolt, 5/16" Fender washer & nyloc nut. .



Place actuator in bracket. Bolt the bracket to the actuator using 1/2" x 2 3/4" Hex Head Bolt and 1/2" lock nut.



Place plastic actuator support on top of rail. Drill making sure upper and lower brackets are vertically aligned. Fasten thru the rail using 1/4" x 2 3/4" Truss head bolts, 1/4" washers and 1/4" nyloc nuts. Bolt through plastic using 1/4"-20 x 1 3/4" Truss head bolts, 1/4" washers and nyloc nut.



Repeat above steps until you have installed all (4) actuator brackets.

Place the assembled frame (with a helper) on top of actuators to mark the appropriate hole placement for the frame mounting brackets using 1/4"-20 x 3/4" truss head bolt with nyloc nut.



Attach actuator motor harness wire to actuator bracket using a self tapping screw and a zip tie.



Install actuator shield using $\frac{1}{4}$ "-20 x 1" Truss Head bolt with $\frac{1}{4}$ " nyloc nut.



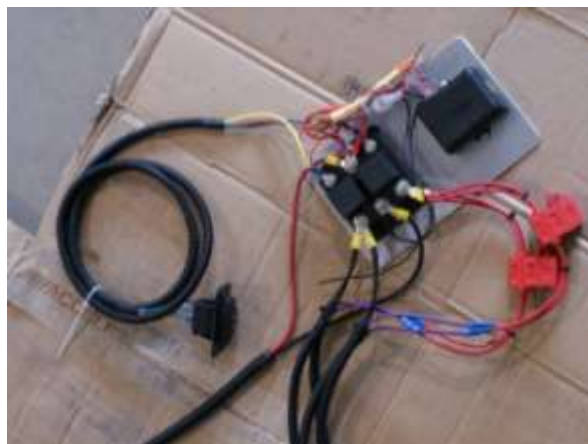
Wiring Harness

Your wiring harness is shipped with correct connections made for simplification. You may need to disconnect the control module for installation. Label wires before disconnecting.

Install rocker switch into your dash on console. Install control module inside the console out of the way so it does not get bumped. Attach upright on console using #8 x $\frac{3}{4}$ " screw.



Run the battery harness thru the hole in the floor located inside the console to the battery (under floor above pontoon tubes). Secure the harness using zip ties to prevent dragging or catching of the harness during transportation.



Run passenger side harness thru hole in floor located inside console, harness must be ran along the cross member on the underside of the floor. (The cross member will help protect the harness) Use zip ties and screws provided to fasten.

Plug in actuator wire into harness that is ran under the floor. Secure wires.

Installation of Canvas

The canvas top can be installed in either direction.

Spread the canvas over the frame. Pull quick pins out on the brow bows and lift up. This allows canvas to "slacken" for the installation of the canvas.



Place snaps on side rail. Click into place corresponding with snaps in the canvas.



Pull canvas over brow bows. Push bows back into place. Re-insert quick pins.

Snap canvas

You have now completed installing your new Blue Water Pontoon Top.

