



SETUP AND INSTALLATION INSTRUCTIONS

8' & 8'6" Blue Water Pontoon Top

Congratulations! You've just received your brand new Bluewater Pontoon Top and now it's time to get it set up and installed on your pontoon. Installing your Bluewater Top is an easy process and usually takes the average team of two about 4-6 hours from removal of the existing bimini top to a fully installed, actuating Bluewater Top. The installation process will be faster and easier if you read through these instructions completely and use the pictures for reference.

If your pontoon already has a bimini top your first step is to remove the bimini and any brackets that it used. Be sure that you pay attention to the anchor light wiring because it will be "reused" later when you wire in the new anchor light on the Bluewater Top.

Once the Bimini is removed it's time to establish the best position for each of your 4 linear actuators. The placement of the linear actuators will vary depending upon the location of doors and your railing design. You want to watch out for side doors and you also need to be careful not to mount an actuator near where the side rail sections are spliced together.

Assembly of Frame

For ease of assembly we suggest using saw horses or another sustainable supports to support side rails at a working height.

1. Install pre-drilled splice bar aluminum as shown in below picture. Use (4) 1/4" x 1 3/4" truss head bolts and (4) 1/4" lock nuts. On splice bars match corresponding letters and numbers to face each other. (A to A, B to B, 1 to 1, 2 to 2)



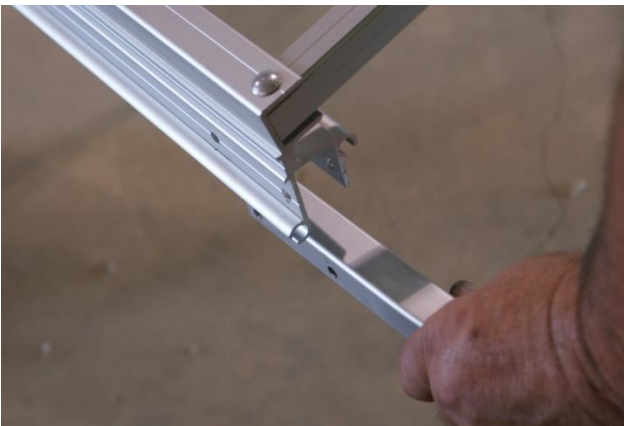
2. Place side rails approximately 8' or 8'6" apart.
3. Insert crown bows using 1 3/4" bolts with lock nuts. (Before tightening crown bows bolts, make sure the top is square)



4. Insert front and rear eyebrow bows as shown.



5. Install $\frac{1}{4}$ "-20 x $1\frac{3}{4}$ " truss head bolts. The bolt installs in the front hole on the side rail frame. Then the washer and lock nut. (Do not put rear bolts in at this time.)



The rear hole has $1\frac{3}{4}$ " truss head bolt, washer and spin nut.

NOTE: One eyebrow bow has holes drilled for bimini light.

Establishing Position of Linear Actuators

Your Blue Water top is designed to properly fit a variety of makes and models of pontoons. The placement of the (4) linear actuators will vary depending upon the location of doors and your railing design.

The best placement for the linear actuators is 1'-4' from each end of the side rails of the top. Obviously you do not want to place the actuators in front of your side doors. See picture below.



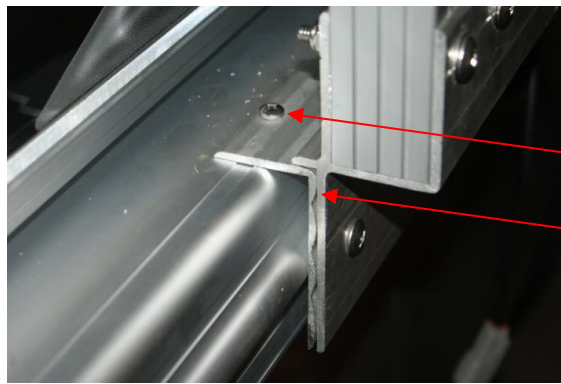
Check the bolt placement for the upper plastic actuator support before drilling holes for bottom actuator support. Some pontoons may require removal of furniture to access.



1. For most applications, place actuator bottom bracket onto edge cap of pontoon and drill (2) holes to secure using $\frac{1}{4}$ "-20 x 1" truss head bolt, $\frac{1}{4}$ " Fender washer and lock nut.



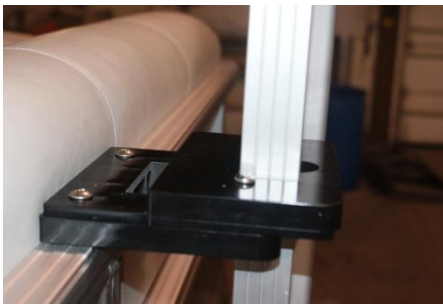
Optional mount method, if edge cap is not flat sided, use #10 x 1" screw to attach angle to edge cap then attach actuator over aluminum angle and drill (2) holes to secure using $\frac{1}{4}$ "-20 x 1" truss head bolt, $\frac{1}{4}$ " Fender washer and lock nut.



(2) #10 x 1"

Aluminum Angle

- 1B. Place plastic actuator support on top of rail. Drill making sure upper and lower brackets are vertically aligned. Fasten thru the rail using $\frac{1}{4}$ " x $2\frac{1}{2}$ " truss head bolts, $\frac{1}{4}$ " washers and $\frac{1}{4}$ " lock nuts.



2. Repeat above steps until you have installed all (4) actuator brackets.
3. Place the assembled frame (with a helper) on top of actuators to mark the appropriate hole placement for the frame mounting brackets $\frac{1}{4}$ "-20 x $1\frac{3}{4}$ " bolt with washer and lock nut.

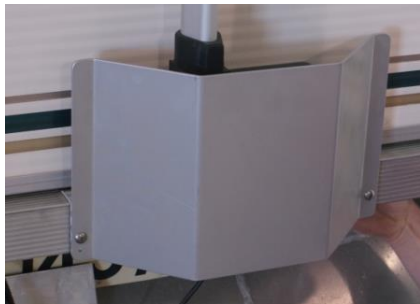


If you have purchased the side curtain option, you will want to center the railing of the pontoon to the first and last cross bow of the BlueWater Top.

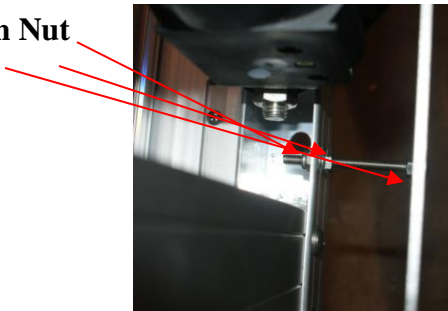
4. Attach actuator motor harness wire to actuator bracket using a #8 screw and a 1/4" line support clip, pre-drill hole with 9/64" drill bit.



5. Install actuator shield using 1/4"-20 x 1" truss head bolt with 1/4"-20 lock nut and washer.



Spin Nut

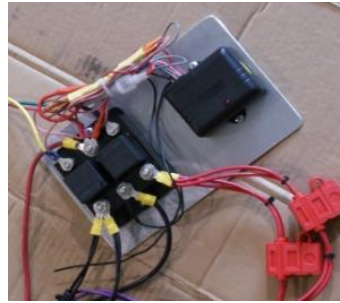
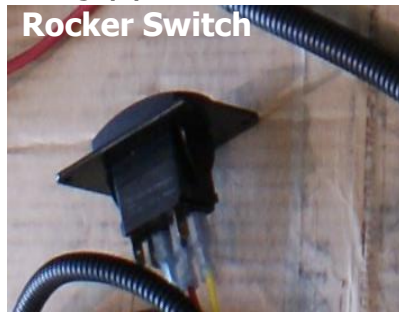


Optional: Drill a hole through the shield and the actuator bracket. Use 1/4"-20 x 3" truss head bolt, (3) 1/4" spin nuts. (Do 4 times, one for each actuator bracket)

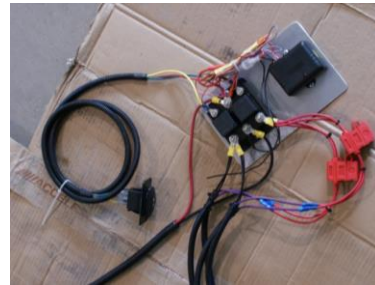
Wiring Harness

Your wiring harness is shipped with correct connections made for simplification. You may need to disconnect the control module for installation. Label wires before disconnecting.

1. Install rocker switch into your dash on console. Install control module inside the console out of the way so it does not get bumped. Attach upright in console on floor using (2) #10 x 1¼" screws.



2. Run the battery harness through the hole in the floor located inside the console to the battery (under floor above pontoon tubes). Secure the harness using zip ties to prevent dragging or catching of the harness during transportation.



3. Run passenger side harness (Labeled 24') through hole in floor located inside console, harness must be ran along the cross member on the underside of the floor. (The cross member will help protect the harness). Use ½" line clips and #8 screws provided to fasten.
4. Run driver's side harness (Labeled 14') through the floor located inside console, harness must be ran along the tube on the underside of the floor. Use zip ties provided to fasten.
5. Plug in actuator wire into harness that is ran under the floor. Secure wires.

Installation of Canvas

1. Place snaps on side rail. Click into place corresponding with snaps in the canvas. The "C" hook portion of the snap clip is the bottom edge. Hook it over the lower

portion of the snap track and push it firmly until it locks over the edge of the track. Pushing on it with a box end wrench (7/16") works great.

Note: Snaps may move in transit when canvas is removed. You may want to use an easily removable tape such as painters trim tape to hold the snaps in place when you remove the canvas for transit. Otherwise, you may need to slide them or remove them and reset them in the correct place.



2. Open canvas out over the frame. Make sure if it has a sunroof that the sunroof zippers are completely closed. The zippered sunroof goes to the front of the frame. If not a sunroof model, check both ends for a mast light installation notch, if present; this goes to the back of the frame.
3. Align the canvas closely from side to side.
4. Open the front two bow sleeve zippers completely.
5. Push the front eyebrow bow up. Makes sure the rear bolt is not installed. This will act as a canvas tensioner later when you pull the eyebrow bows down to install the bolts.



6. Slide the canvas with zipper flaps over the eyebrow bow, reconnect the zippers and zip them closed.
7. At the two front corners of the side rail, the front snap on each side will usually be around 1/2" from the front edge. Check the canvas snap cap installation and then install a snap clip on each side rail to match the canvas.
8. Snap the canvas on each front side.

Note: The canvas really needs to be stretched to get the opposite side snap installed. Make sure the sew seam is even with the front edge of the top frame side rails. Cold weather may not allow the canvas to stretch enough for installation.

9. Leave the front eyebrow bow in the up position. Next go to the back of the frame and canvas.

Two choices can be used to install the canvas at the rear of the frame.

- A. You can either repeat the process listed above for the front bow sleeve or you may find it easier to set the two rear corner snap clips first.
- B. Carefully stretch and attach the canvas at the two rear corner snaps, then attach the zippers over the raised position rear eyebrow bow and re-zip them.

Once all four corner snaps are installed and snapped on along with the front and rear eyebrow bow zippers installed and zipped closed:

- A. Pull down the eyebrow bows and install the bolts. Due to the tension on the bows now from the canvas you may need to re-drill these holes using $\frac{1}{4}$ " drill bit for the bolts to align. If re-drilling is needed, be careful! Protect the canvas from contact with the drill and drill bit.
- B. Next, go to the center of the canvas and install the snap clips and canvas snaps.
- C. Install the rest of the snap clips and snaps along both side rails.

The canvas top has three sets of cross flaps that snap to three of the curved crown bows.



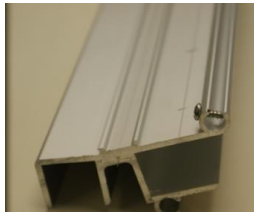
- D. The curved crown bows have snap tracks on all four sides. Install the snap clips on the front, rear and middle crown bows where the flaps are sewn to the top canvas. Snap the flap snaps to the clips.

The top canvas is now fully installed.

Side Curtain/Mooring Cover Option

Slide side curtain plastic tube into frame.

Insert #8 x 1/2" screws as a stop to prevent side curtain from migrating out.



Zip in front and rear side curtains.

Installation of Bimini Light Wiring

Both rear actuator assemblies are labeled and the 1/2" holes are pre-drilled. It is up to you to decide which side to run the bimini wire. You will be hooking wire together under floor of pontoon.



Put cable in side rail channel and attach with 1/4" line support clip and #8 x 1/2" screw.
(You will have to pre-drill hole using a 9/64" drill bit)



Run conduit with wiring through the ½" hole in the actuator arm (which must be fully extended/up) and down through the channel and through ½" hole in the bottom of the actuator. Then finally under floor and attach to existing bimini wire.



Insert conduit and wiring through this hole

You have now completed installing your new Blue Water Pontoon Top.



Sunroof Option*

*If you ordered a sunroof option on your Blue Water Top, there are footman loops and straps that are used to secure the sunroof back once it is open. These need to be installed by the customer.